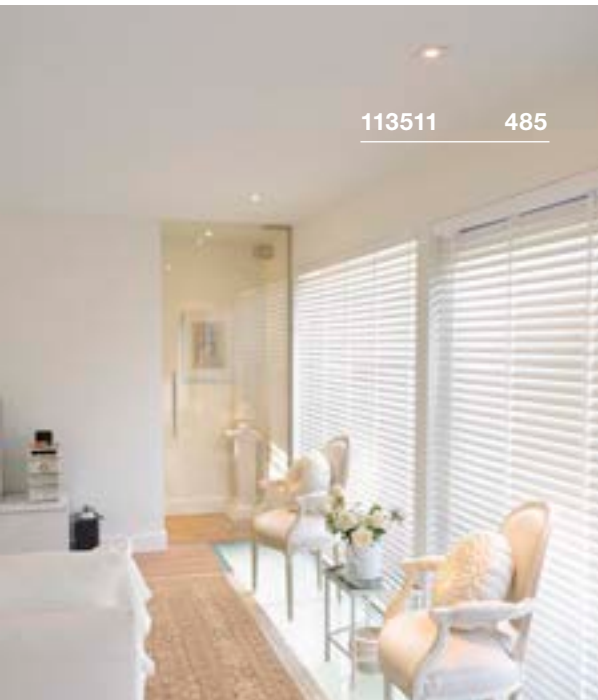




113510 485



113510 485



113511 485

**NEW TRIA 78**  
Single, round, CS, QPAR51

E-A++ Spektrum A++-E



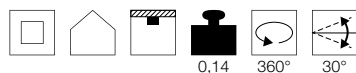
**NEW TRIA 78**  
Single, square, CS, QPAR51

E-A++ Spektrum A++-E

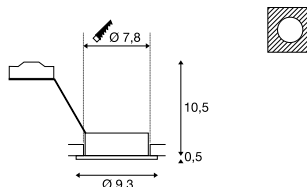


**Produktangaben**

220-240V ~50/60Hz  
Material: Aluminium



**Maßzeichnung**

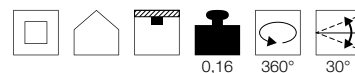


**Hinweis**

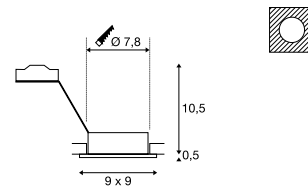
Clipfedern  
Materialstärke Einbaufäche: 18 mm max

**Produktangaben**

220-240V ~50/60Hz  
Material: Aluminium



**Maßzeichnung**



**Hinweis**

Clipfedern  
Materialstärke Einbaufäche: 18 mm max

**Leuchtmittlempfehlung**

LED GU10 7,2W 36°  
4000K 540lm EEK=A+  
8kWh/1000h  
Art. Nr. 1001565



LED GU10 7W 25/40/55°  
3000K 300lm EEK=A  
7kWh/1000h  
Art. Nr. 560603



**Leuchtmittelangaben**

max. 50W QPAR51

Variante	Art. Nr.
GU10   QPAR51	
■ schwarz	113490
□ weiß	113510
■ matt aluminium	111360

**Leuchtmittlempfehlung**

GU10 5,5W 36°  
2800K 420lm EEK=A+  
6kWh/1000h  
Art. Nr. 1001217



LED GU10 5,5W 38°  
2700K 400lm EEK=A+  
6kWh/1000h  
Art. Nr. 1001030



**Leuchtmittelangaben**

max. 50W QPAR51

Variante	Art. Nr.
GU10   QPAR51	
■ schwarz	113491
□ weiß	113511
■ matt aluminium	111361