



**PHILIPS**

Fortimo

LED system

SLM Gen5

Exceptional light  
quality, **ultimate**  
**flexibility**

# Light that sells

Creating an attractive retail experience requires lighting perfection. Solutions that can bring out rich colors and crisp whites, highlight textures and finishes. So a store can be seen in the best possible light.

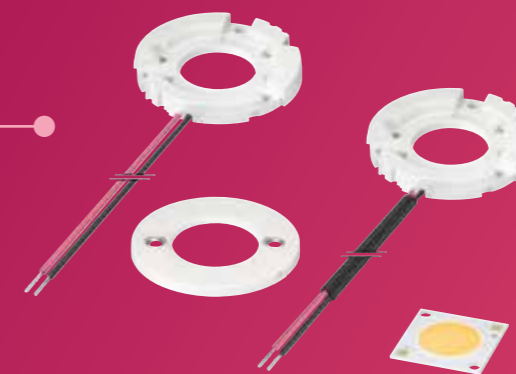
It's a challenge that inspires manufacturers and designers to take retail lighting to the next level. Used to its full potential in retail, lighting makes merchandise, brands, and businesses shine. With the latest generation of spot lighting, you can imagine new possibilities and offer unique lighting solutions for all your customer's needs.

### A complete portfolio on a single platform

The Fortimo LED SLM Gen5 range includes a full range of color temperatures, plus three additional types that are optimized for specific lighting applications: Premium White and CrispWhite for fashion retail stores and Food Premium Red and Food Warm White for food retail.

## What's new in Gen5?

up to **152\*** lm/W  
up to **95 °C**  
Extended Tc



Exceptional rendering of whites and rich colors

Extensive Choice of color temperatures and CRI

Ultimate flexibility for optimized luminaire performance

Easy configuration of light level through our SimpleSet technology

Small Light Emitting Surface (LES) sizes for miniaturized luminaires

Efficacies up to 152\* lm/W

Extended Tc of up to 95 °C possible

Range covers 800 lm to 6000 lm

\* Fortimo SLM C 840 1208 L15 2024 G5 - 589mA - 3000lm - Tc=70°C



### A perfect fit for every stage

The Fortimo LED SLM Gen5 portfolio allows you to select a product based on quality of light, lumen per Watt or lumen per Euro. Each module is also interchangeable, enabling retailers to create different lighting effects throughout the entire store with just one consistent luminaire range.

“

Optimized lighting makes merchandise shine.”



# This is what we call “ultimate flexibility”.

Quality of light has always been an essential aspect of lighting. In the past each lighting technology had its unique characteristics. For different quality of light, adoption of another lighting technology was required, i.e. halogen vs quartz metal halide. MASTERColour CDM technology changed this landscape completely; retailers had the choice between CRI 80 and CRI 90 light sources, different white tones and a choice of various color temperatures.

With Fortimo LED SLM Gen5 we offer our customers an even wider range of options, all within one portfolio. This allows customers to select any light color, CRI, white tone and Lm package without having to change the complete fixture. This is what we call “ultimate flexibility”.

# Create a unique lighting experience

With a superior color rendering index of CRI >80 or CRI >90, the complete Fortimo LED SLM Gen5 range provides a fantastic color experience with deep color saturation, natural white tones and color consistence. What’s more, the deep saturation of reds (R9), lives up to today’s requirements in retail lighting.

Fortimo SLM Gen5 offers a wide range of color temperatures: warm white light in 2700, 3000 and 3500 K and neutral white light in 4000 K. And thanks to its exceptional color consistency (MacAdam Ellipse of 3 SDCM) and very limited color spread over lifetime, the quality of light in your store is assured.



“

CrispWhite technology has given my store a **real wow factor**. My customers know it feels different, they just can’t work out why.”

**Fortimo LED SLM Gen5 CrispWhite**  
CrispWhite takes LED light quality to exceptional levels. CrispWhite technology offers unparalleled rendering of whites and colors within one light source. A unique solution that is unbeatable for high-end fashion retail applications.

CrispWhite technology is now available in all lumen packages and for narrow beam applications (LES sizes 9-19 mm).



## **Fortimo LED SLM Gen5 Food Warm White and Food Premium Red**

The Fortimo LED SLM Gen5 Warm White creates a tasteful, warm color impression that makes fresh food, such as fruit, vegetables and bread, look highly attractive. The Fortimo LED SLM Gen5 Food Premium Red has been developed with a tuned color spectrum that enhances red and simultaneously displays white in a clear and fresh way. It creates a punchy contrast between the two colors, enhancing the appearance of fresh meat.

Indoor lighting

Fortimo LED SLM Gen5

Lighting experience



# Light up desire

For retail applications, creating a unique and dramatic ambience can entice people to come into a store. It also encourages them to stay for longer. And the more time they spend in store, the more they're likely to spend at the checkout. Our Fortimo LED lighting solutions are designed to light up desire. From Fortimo LED SLM Premium White that combines excellent light quality with unrivaled efficiency to Fortimo LED SLM CrispWhite that creates the ultimate store experience.



Indoor lighting  
 Fortimo LED SLM Gen5  
 Fashion Retail

## Fortimo LED SLM Gen5



As energy costs are high on the retail agenda, our aim is to develop the most efficient light sources that offer good quality of light. This portfolio includes several propositions that are tailored for Fashion Retail ranging from 2700K, 3000 K, 3500 K and 4000 K with a high color rendering index of CRI>80 and CRI>90.

### Specifications

2700K, 3000K, 3500K & 4000K on BBL

CRI 80 or 90

Up to 152 lm/W

## Fortimo LED SLM Gen 5 Premium White



Excellent light quality with the perfect total cost of ownership; that's the ultimate combination that fashion retailers are looking for. Fortimo LED SLM Premium White achieves exactly the right balance with high rendering of colors and beautifully whites. The must-have light source for fashion stores and shopping malls.

### Specifications

3000 K below BBL

CRI 80 or 90

110 lm/W

Premium White effect

### Explore more

[www.lighting.philips.co.uk/PremiumWhite](http://www.lighting.philips.co.uk/PremiumWhite)

## Fortimo LED SLM Gen5 CrispWhite



Since its introduction, Fortimo LED SLM CrispWhite has revolutionized fashion retail applications. It's the first light source that can make whites appear pure, bright and crisp at the same time as making other colors appear warm, saturated and intense. Perfect for high-end stores and chic boutiques. The result is a totally new color experience. So you can promise fashion retailers all the advantages of LED, but with the added benefit of enhanced rendering for both whites and colors.

### Specifications

3000 K below BBL

CRI 90

90 lm/W

CrispWhite effect

### Explore more

[www.lighting.philips.co.uk/CrispWhite](http://www.lighting.philips.co.uk/CrispWhite)



# Savour every detail

When you're passionate about food, seeing every detail counts. Thanks to two optimized colors, Warm White and Premium Red, you can design luminaires that will tempt customers to fill their baskets.



Indoor lighting

Fortimo LED SLM Gen5

Food

## Fortimo LED SLM Gen 5 Food Warm White



The Fortimo LED SLM Warm White creates a unique color impression that makes fresh food, such as fruit, vegetables and bread, look incredibly attractive. It brings out the natural brilliance of colors, especially greens, reds and yellows, making them appear warm and saturated. Exactly what retailers expect from your fresh food display lighting.

### Specifications

2500 K

CRI 90

70 lm/W

### Explore more

[www.lighting.philips.co.uk/WarmWhite](http://www.lighting.philips.co.uk/WarmWhite)

## Fortimo LED SLM Gen 5 Food Premium Red

The Fortimo LED SLM Premium Red is a dedicated solution for fresh meat. It's been developed with a tuned color spectrum that enhances red, yet simultaneously presents white in a clear and fresh way. It's this punchy contrast between the two colors that enhances the appearance of fresh meat. So your solutions have more punch too.

### Specifications

3000 K below BBL

CRI 90

70 lm/W

Red enhancement

### Explore more

[www.lighting.philips.co.uk/PremiumRed](http://www.lighting.philips.co.uk/PremiumRed)



# Your vision, our modules

High quality, easy to work with and future-proofed. That's the Fortimo LED SLM Gen5 modules.



### A smart system

The Fortimo LED SLM Gen5 system is backward compatible and easy to design-in. It also has a long and proven lifetime backed up by the Philips five-year system warranty.

The SLM modules promise flexible lumen output settings, consistent light distribution, and a standardized optical, mechanical, electrical and thermal interface. The module design is Zhaga-compliant and is backwards-compatible with previous SLM generation modules and drivers.\*

\* Zhaga-compliant and is backwards-compatible with previous SLM generation modules and drivers. Measurements on the SLM 3000 lm L15 module show compliance to Zhaga book 3 version 1.2

### Spot light essentials

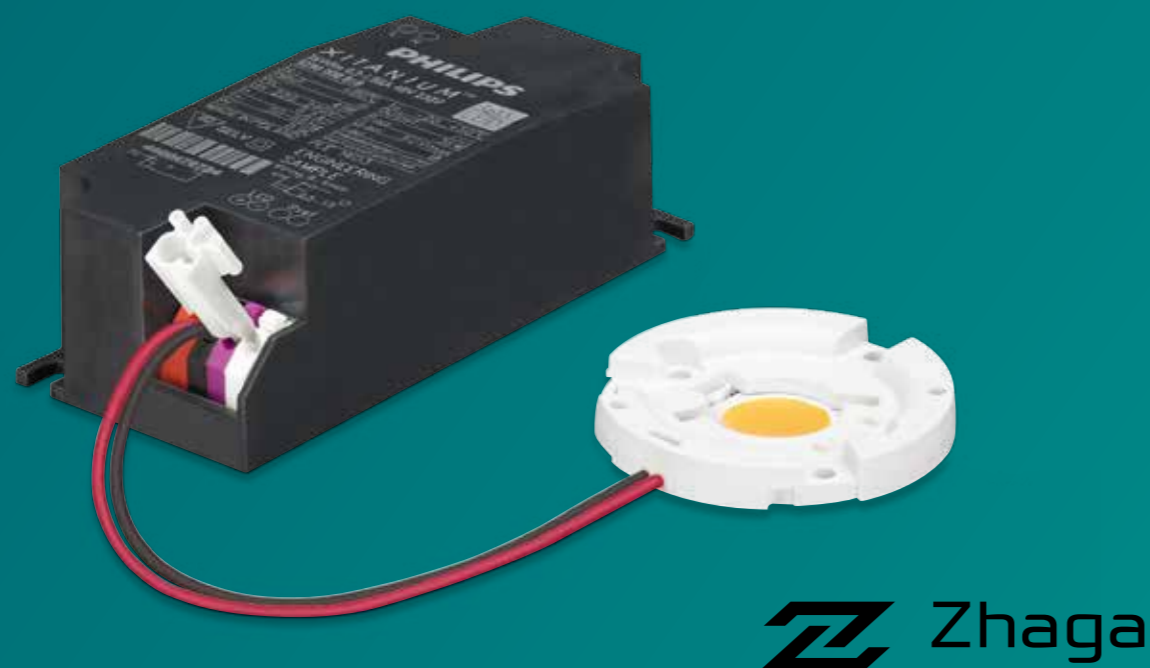
The Fortimo LED SLM is designed to work with our wide range of Xitanium LED drivers. This smart system approach includes the following spot light essentials:

- Xitanium mini drivers to minimize luminaire designs
- Xitanium window drivers with SimpleSet technology for maximum flexibility
- DALI dimming for scene setting and additional energy savings
- Independent driver with mains loop through, for easy installation with a remote driver
- DC input is enabled to ensure compatibility with a central emergency system.

### Easy design-in and approbation

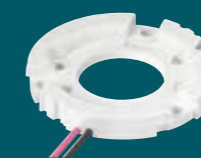
Fortimo LED SLM systems are designed to meet the challenges faced by luminaire manufacturers:

- Easy design-in possibilities with a high Tc point of 95 °C for further miniaturization
- CE, REACH and RoHS-certified for quick and easy luminaire approbation
- Full set of complementary thermal and optical partner components available for quick luminaire design.



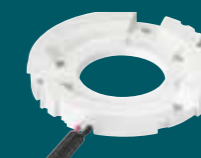
## Maximum flexibility

The modules come with three different holder options. These must be ordered separately:



**Standard holder**

with two fixed, pre-molded connection wires (60 cm, pre-tinned)



**Down light holder**

with two fixed, pre-molded connection wires (60 cm, tin-dipped) with an extra sleeve to accommodate strain relief



**Poke-in holder**

without fixed wires, but with two push-in connection points allowing users to mount their own wires.

# Specifications



## Fortimo SLM Gen5

Product name	EOC code
LES size: 9mm - typical lm ouput: 1100lm	
Fortimo SLM C 827 1203 L09 1619 G5	694793911755000
Fortimo SLM C 830 1203 L09 1619 G5	694793911757400
Fortimo SLM C 835 1203 L09 1619 G5	694793911759800
Fortimo SLM C 840 1203 L09 1619 G5	694793911761100
Fortimo SLM C 927 1203 L09 1619 G5	694793911763500
Fortimo SLM C 930 1203 L09 1619 G5	694793911765900
Fortimo SLM C 935 1203 L09 1619 G5	694793911767300
Fortimo SLM C 940 1203 L09 1619 G5	694793911769700
LES size: 13mm - Typical lm output: 1100lm	
Fortimo SLM C 827 1204 L13 2024 G5	69479391177200
Fortimo SLM C 830 1204 L13 2024 G5	694793911779600
Fortimo SLM C 835 1204 L13 2024 G5	694793911781900
Fortimo SLM C 840 1204 L13 2024 G5	694793911783300
Fortimo SLM C 927 1204 L13 2024 G5	694793911785700
Fortimo SLM C 930 1204 L13 2024 G5	694793911787100
Fortimo SLM C 935 1204 L13 2024 G5	694793911795600
Fortimo SLM C 940 1204 L13 2024 G5	694793911799400
LES size 13mm - Typical lm output: 2000lm	
Fortimo SLM C 827 1205 L13 2024 G5	694793911809000
Fortimo SLM C 830 1205 L13 2024 G5	694793911811300
Fortimo SLM C 835 1205 L13 2024 G5	694793911813700
Fortimo SLM C 840 1205 L13 2024 G5	694793911815100
Fortimo SLM C 927 1205 L13 2024 G5	694793911817500
Fortimo SLM C 930 1205 L13 2024 G5	694793911819900
Fortimo SLM C 935 1205 L13 2024 G5	694793911821200
Fortimo SLM C 940 1205 L13 2024 G5	694793911823600
LES size 15mm - Typical lm output: 3000lm	
Fortimo SLM C 827 1208 L15 2024 G5	694793911827400
Fortimo SLM C 830 1208 L15 2024 G5	694793911831100
Fortimo SLM C 835 1208 L15 2024 G5	694793911833500
Fortimo SLM C 840 1208 L15 2024 G5	694793911835900
Fortimo SLM C 927 1208 L15 2024 G5	694793911837300
Fortimo SLM C 930 1208 L15 2024 G5	694793911839700
Fortimo SLM C 935 1208 L15 2024 G5	694793911841000
Fortimo SLM C 940 1208 L15 2024 G5	694793911843400
LES size 19mm - Typical lm output: 4500lm	
Fortimo SLM C 830 1211 L19 2828 G5	694793911857100
Fortimo SLM C 835 1211 L19 2828 G5	694793911859500
Fortimo SLM C 840 1211 L19 2828 G5	694793911861800
Fortimo SLM C 927 1211 L19 2828 G5	694793911863200
Fortimo SLM C 930 1211 L19 2828 G5	694793912056700
Fortimo SLM C 935 1211 L19 2828 G5	694793911853300
Fortimo SLM C 940 1211 L19 2828 G5	694793911829800

## Fortimo SLM Gen5 - Premium White

Product name	EOC code
LES size: 9mm - typical lm ouput: 1100lm	
Fortimo SLM C 830 PW 1203 L09 1619 G5	694793911771000
Fortimo SLM C 930 PW 1203 L09 1619 G5	694793911773400
LES size: 13mm - Typical lm output: 1100lm	
Fortimo SLM C 830 PW 1204 L13 2024 G5	694793911803800
Fortimo SLM C 930 PW 1204 L13 2024 G5	694793911805200
LES size 13mm - Typical lm output: 2000lm	
Fortimo SLM C 830 PW 1205 L13 2024 G5	871869649242000
Fortimo SLM C 930 PW 1205 L13 2024 G5	871869649244400
LES size 15mm - Typical lm output: 3000lm	
Fortimo SLM C 830 PW 1208 L15 2024 G5	871869649246800
Fortimo SLM C 930 PW 1208 L15 2024 G5	871869649248200
LES size 19mm - Typical lm output: 4500lm	
Fortimo SLM C 830 PW 1211 L19 2828 G5w	871869649250500
Fortimo SLM C 930 PW 1211 L19 2828 G5	871869649252900

## Fortimo SLM Gen5 - Crisp White

Product name	EOC code
LES size: 9mm - typical lm ouput: 1100lm	
Fortimo SLM C 930 CW 1203 L09 1619 G5	694793911775800
LES size: 13mm - Typical lm output: 1100lm	
Fortimo SLM C 930 CW 1204 L13 2024 G5	694793911807600
LES size 13mm - Typical lm output: 2000lm	
Fortimo SLM C 930 CW 1205 L13 2024 G5	694793911825000
LES size 15mm - Typical lm output: 3000lm	
Fortimo SLM C 930 CW 1208 L15 2024 G5	694793911847200
LES size 19mm - Typical lm output: 4500lm	
Fortimo SLM C 930 CW 1211 L19 2828 G5	694793911849600

## Fortimo SLM Gen5 - Food applications

Product name	EOC code
Fortimo SLM C 930 FWW 1211 L19 2828 G5	694793911845800
Fortimo SLM C 930 FPR 1211 L19 2828 G5	694793911801400



## Driver compatibility

Module type	Xitanium LED driver window*
Standard holder	
1203, L9	Xitanium 20W 0.15-0.5A 48V
1204, L13	Xitanium 20W 0.15-0.5A 48V
	Xitanium 36W 0.3-1A 48V
1205, L13	Xitanium 20W 0.15-0.5A 48V
	Xitanium 36W 0.3-1A 48V
1208, L15	Xitanium 36W 0.3-1A 48V
	Xitanium 50W 0.9-1.4A 48V
	Xitanium 50W 0.7-1.5A 48V
1211, L19	Xitanium 50W 0.7-1.5A 48V
	Xitanium 50W 0.9-1.4A 48V



\* Check the Xitanium indoor point driver portfolio or [EasyDesignInTool.com](https://www.easydesignintool.com) for all available drivers with the operating window you need.

## Fortimo SLM Gen5 - Holders

Product name	EOC code
Standard holder	
FORTIMO SLM H 1619 G1	871869652205900
FORTIMO SLM H 2024 G1	871869650674500
FORTIMO SLM H 2828 G1	871869650680600
Downlight holder	
FORTIMO SLM H DL 1619 G1	871869652208000
FORTIMO SLM H DL 2024 G1	871869650677600
FORTIMO SLM H DL 2828 G1	871869650683700
Poke-in holder	
FORTIMO SLM H PI 1619 G1	871869652211000
FORTIMO SLM H PI 2024 G1	871869650700100
FORTIMO SLM H PI 2828 G1	871869650702500



## Easy Design-in Tool

In order to help Luminaire manufacturers find their way through the growing maze of complexity of LED systems and the different specifications they are capable of achieving, Philips developed the Easy Design-in Tool.

This unique cloud-based software

makes you able to select and fine-tune your own LED system by addressing the optical, thermal, electrical and mechanical impacts. On-line, in less than 5 minutes, and with full flexibility.

[EasyDesignInTool.com](https://www.easydesignintool.com)



